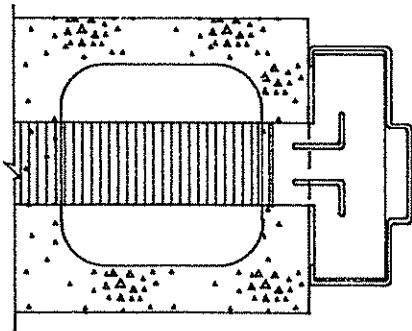
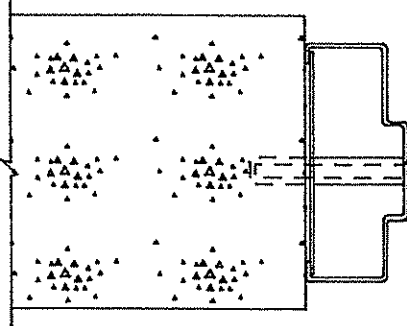


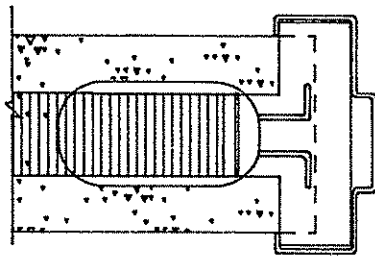
# COMMON WALLS FOR MASONRY ANCHOR



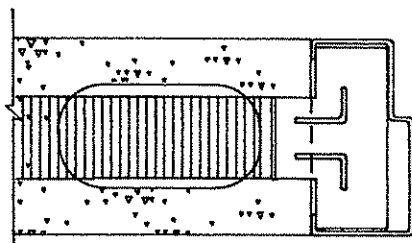
BUTTED MASONRY-BRICK-TILE  
OR CONCRETE BLOCK.



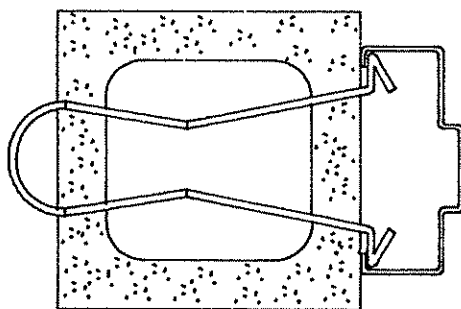
EXISTING MASONRY OR  
POURED CONCRETE.



WRAP MASONRY-BRICK-TILE  
OR CONCRETE BLOCK.



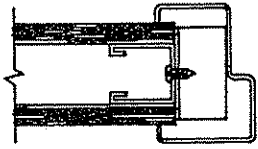
BUTTED MASONRY-BRICK-TILE  
OR CONCRETE BLOCK.



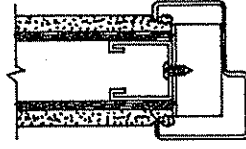
BUTTED MASONRY-BRICK-TILE  
OR CONCRETE BLOCK.

# TYPICAL STEEL STUD WALL CONSTRUCTION

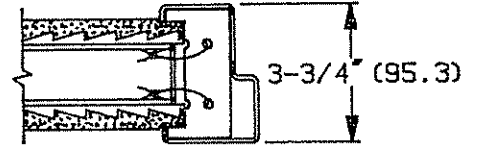
**NOTE:** JAMB DEPTHS FROM 3" (76.2) THRU 14" (355.6) ARE AVAILABLE IN 1/8" (3.2) INCREMENTS WITH STEEL STUD ANCHORS



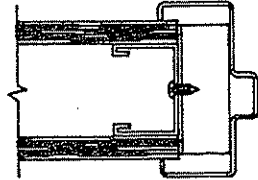
CHANNEL STEEL STUD WITH GYPSUM



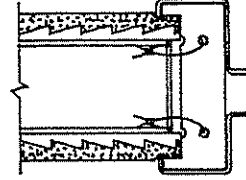
CHANNEL STEEL STUD WITH PLASTER ON ROCK LATH



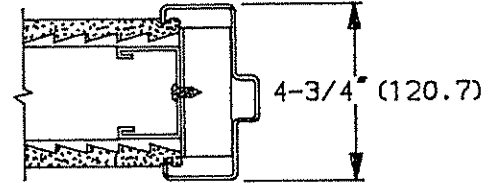
TRUSS STEEL STUD WITH PLASTER ON METAL LATH



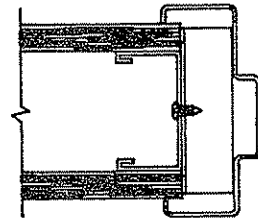
CHANNEL STEEL STUD WITH GYPSUM



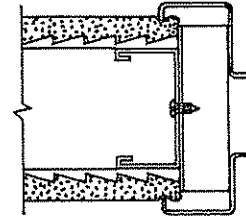
TRUSS STEEL STUD WITH PLASTER ON METAL LATH



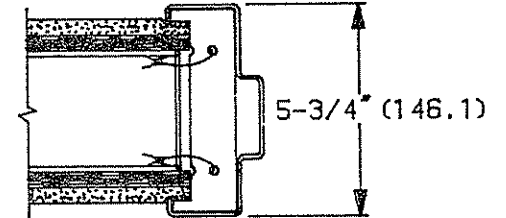
CHANNEL STEEL STUD WITH PLASTER ON METAL LATH



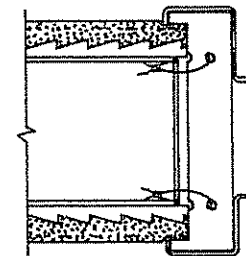
CHANNEL STEEL STUD WITH GYPSUM



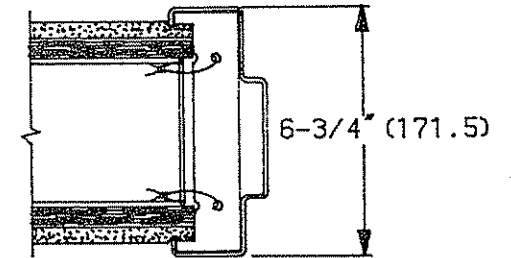
CHANNEL STEEL STUD WITH PLASTER ON METAL LATH



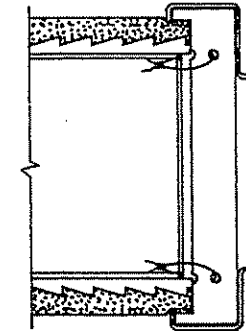
TRUSS STEEL STUD WITH PLASTER ON ROCK LATH



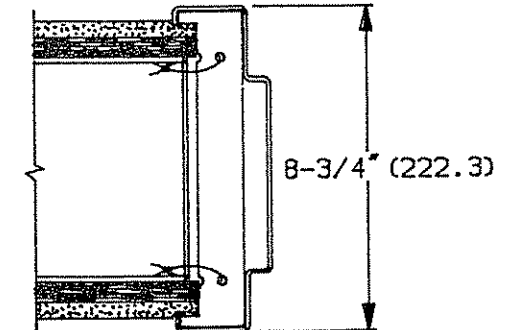
TRUSS STEEL STUD WITH PLASTER ON METAL LATH



TRUSS STEEL STUD WITH PLASTER ON ROCK LATH



TRUSS STEEL STUD WITH PLASTER ON METAL LATH



TRUSS STEEL STUD WITH PLASTER ON ROCK LATH